



IELI WEEKLY MEMO



University of North Texas

Intensive English Language Institute

Spring 2, 2009

Week II: March 30—April 3

A. "Going to UNT" Meetings

If you are planning to attend UNT beginning Summer or Fall 2009, you should go to one of these meetings:



Monday, April 6

12:15 – 1 p.m. in ISB 203. For level 5/5, 5/6, 6/6, and 6/G students who plan to begin a **Bachelor's or 2nd Bachelor's** degree at UNT in Summer or Fall 2009.

Tuesday, April 7

12:15 – 1 p.m. in ISB 203. For level 5/5, 5/6, 6/6, and 6/G students who plan to begin a **Master's or Doctoral** degree at UNT in Summer or Fall 2009.

B. Tax Seminar

Who: All international students who did **NOT** have a job in the U.S. in 2008

What: Tax Seminar (No Job/No Income)

When: Wednesday, April 8, at 5 p.m.

Where: Terrill Hall, Room 120

Why: All students who lived in the United States in 2008 must file taxes with the U.S. government. If you did **NOT** have a job in the U.S. in 2008, you should attend the tax seminar to receive help with filing your tax form. **You must file your tax form by April 15, 2009.**



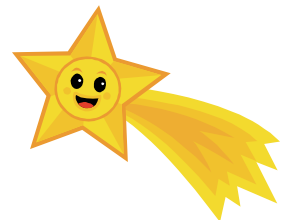
C. Egg Dying

Thursday, April 9, from 12 - 1 p.m. in the IELI Student Lounge

Many Americans dye hard-boiled eggs to celebrate spring and Easter. Adults also hide plastic eggs with candy inside for children to find. Look around the ISB on Thursday, and you might find a candy-filled egg!



D. The STAR



Calling all writers!

We are going to put out our IELI magazine, *The STAR*, in a couple of weeks, and we are looking for your writing to publish. The magazine is printed and put on the IELI website, so

many people will read it. This is your chance to be published! Send your short articles, poems, opinion essays, and pictures to Meghan.Merchant@unt.edu. You are welcome to work on something with your friends and submit it. Meghan needs all the submissions by **Wednesday, April 22**. The sooner you turn it in, the more likely it is that it will get published! Come on, give it a try!



E. Survey Results

Thanks to all students who completed the IELI Facility Survey during the Spring 1 term. UNT-International staff read your comments and suggestions. Here are the responses you gave to the survey and the actions UNT has taken:

How could the new building be improved?

1. **Keep it clean.** There is a new custodial service team cleaning our building at night. Students should make sure they place their trash in the trash bins to keep things clean.
2. **Adjust rooms' temperature.** This is a problem that is being fixed.
3. **Need a bigger computer lab.** Unfortunately, there is no more room in our building.
4. **Need bigger classrooms.** IELI is looking for more classrooms on campus and should have some by Fall 2009.
5. **Need more computers.** There is no more space to add computers in IELI.
6. **Need more restrooms.** The floor plan and plumbing of our building do not allow for any more restrooms.
7. **Need more study rooms.** There is no more space on our floor. There is a library on the first floor of the ISB to study in.
8. **Need microwaves and refrigerators.** This is not possible. There is a microwave in the Union. Students can bring refrigerated lunch boxes to keep their food cold.
9. **New vending machines.** There are three vending machines in the first-floor stairwell on the north end of the building for you to use.
10. **Need lockers.** There are many lockers provided for your use in the Student Lounge.
11. **Need more benches in front of IELI.** Benches are now in the main hallway of the ISB, and there is no room in front of the IELI door.
12. **Need a bigger student lounge.** Unfortunately, there is no more space in our building, and we cannot change the size of the room.



Thank you for your responses! We are working hard to improve our building.

F. UNT Activities



Rock Climbing — Monday, April 6, from 3—9 p.m. Special Dollar Climb at the UNT rock wall in the Pohl Recreation Center.

UNT Opera/Chamber Orchestra — Tuesday, April 7 at 8 p.m., in the Murchison Performing Arts Center. Tickets are \$15. Purchase at the music box office.

Cariacatures — Wednesday, April 8 at 11 a.m., in the One O'Clock Lounge in the Student Union. Get a free drawing made of yourself.

UNT Top Model — Thursday, April 9, at 7 p.m., in the Union Silver Eagle Suite. Watch UNT's most intense fashion runway competition.

Day Hike — Saturday, April 18. Learn the basics of beginner hiking on this shady, 6-mile hike in Walnut Grove Park along Lake Grapevine. Sign up in the Outdoor Pursuits office in the Pohl Recreation Center before April 13. Cost is \$8.

